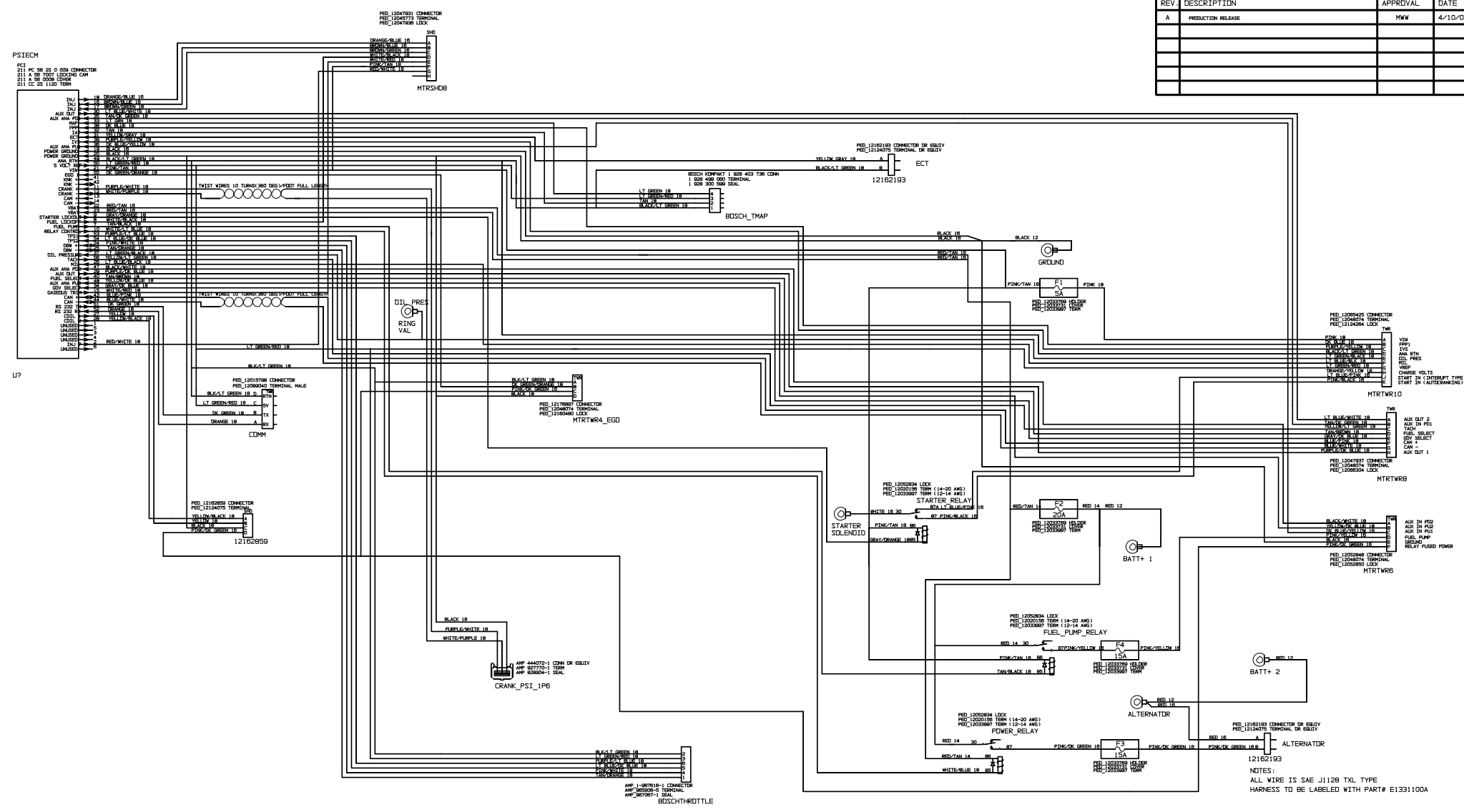


REVISIONS			
REV	DESCRIPTION	APPROVAL	DATE
A	PRODUCTION RELEASE	MW	4/10/03



NOTES:
ALL WIRE IS SAE J1128 TXL TYPE
HARNES TO BE LABELED WITH PART# E1331100A

THIS DRAWING IS THE PROPERTY OF EControls, Inc. AND IS SUBJECT TO RETURN UPON REQUEST AND IS NOT TO BE COPIED OR REPRODUCED WITHOUT WRITTEN PERMISSION. ALL RIGHTS RESERVED.	DRAWN BY: M. WALSER SHEET 1 OF 1 DATE: 4/10/2003	CHK BY: APPROVED: DATE: 4/10/2003
	EControls Inc. GM 1.6L ECM MAIN HARNESS	
	USED ON:	DRAWING NUMBER: E1331100 REVISION: A